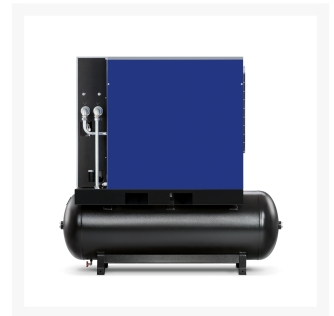




Screw compressor EcoPower 21 Combi Dry 10 bar 20 HP/ 15 kW 2317 l/min 500 l

Product Images



Additional Information

SKU	36679521
EAN	8712418423433
Length (mm)	1904
Width (mm)	833
Height (mm)	1832
Weight (kg)	588.000000
Workload (labor/rest %)	100/0
Motor power (hp / kW)	20.0 HP / 15.0 kW
Drive	V-belt driven
Control panel	ES 4000 CONNECT
Dryer	Yes
Air receiver	Yes
Capacity air receiver (l)	500
Galvanized tank	No
Maximum pressure (bar)	10
Free air delivery (l/min)	2317
Free air delivery (m3/h)	139
Noise level dB(A) (0 m)	67
Plug type	EU
Maximum ambient temperature (°C)	46
Oilfree	No
Air-end	C67
Start	Y-Δ
Voltage (V)	400 V / 50 Hz / 3 Ph
Variable speed (IVR)	No

