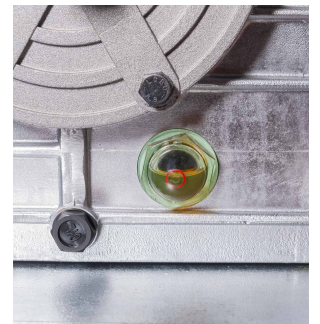
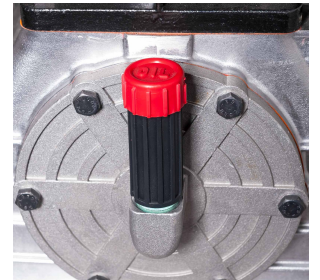
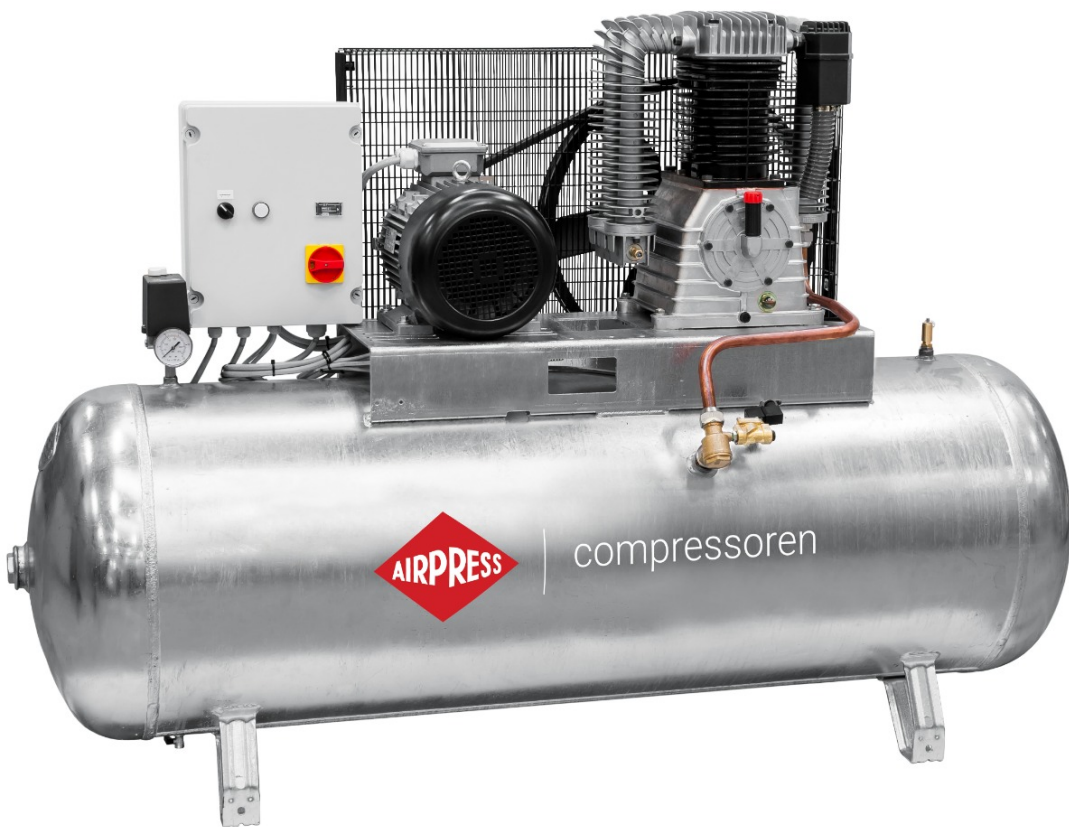




Compressor G 1500-500 SD Pro 14 bar 10 hp/7.5 kW 596 l/min 500 l galvanized star delta switch

369674



Product details

SKU	369674
EAN	08712418332568
Length (mm)	1930
Width (mm)	630
Height (mm)	1370
Weight (kg)	351.000000
Workload (labor/rest %)	50/50
Start	Y-Δ
Drive	V-belt driven
Belt size	SPB 2120
Flywheel diameter (mm)	550
Pulley diameter (mm)	160
Cylinders	2
Voltage (V)	400 V / 50 Hz / 3 Ph
Air receiver	Yes
Capacity air receiver (l)	500
Galvanized tank	Yes
Intake capacity (l/min)	857
Free air delivery (l/min)	596
Free air delivery (m3/h)	35.76
Cut-in pressure (bar)	12
Maximum pressure (bar)	14
Noise level dB(A) (0 m)	74
Noise level dB(A) (4 m)	54
Noise level dB(A) (7 m)	49
Sound volume reduction	No

Main air connection (")	1/2
Number of reducable couplings air connections	-
Stages	2
Oilfree	No
Filter with reducer	No
Pump speed (RPM)	800
Motor power (hp / kW)	10.0 HP / 7.5 kW
Wheels	No
Pump type	K50
Intercooler	Yes
After cooler	Yes

