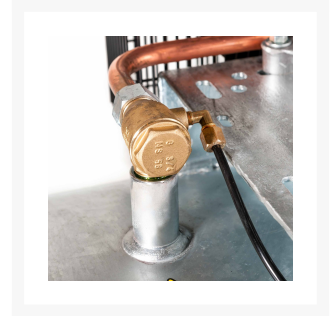




Compressor G 1000-500 Pro 11 bar 7.5 hp/5.5 kW 665 l/min 500 l galvanized

Product Images



Additional Information

SKU	369569
EAN	08712418332544
Length (mm)	1930
Width (mm)	600
Height (mm)	1280
Weight (kg)	205.000000
Workload (labor/rest %)	50/50
Start	Direct
Drive	V-belt driven
Flywheel diameter (mm)	400
Pulley diameter (mm)	140
Cylinders	2
Voltage (V)	400 V / 50 Hz / 3 Ph
Air receiver	Yes
Capacity air receiver (l)	500
Galvanized tank	Yes
Intake capacity (l/min)	872
Free air delivery (l/min)	665
Free air delivery (m ³ /h)	39.9
Cut-in pressure (bar)	9
Maximum pressure (bar)	11
Noise level dB(A) (0 m)	77
Noise level dB(A) (4 m)	57
Noise level dB(A) (7 m)	52
Sound volume reduction	No
Main air connection (")	1/2

Number of reducable couplings air connections	-
Stages	2
Oilfree	No
Filter with reducer	No
Pump speed (RPM)	1200
Motor power (hp / kW)	7.5 HP / 5.5 kW
Wheels	No
Pump type	K30
Intercooler	Yes
After cooler	Yes

