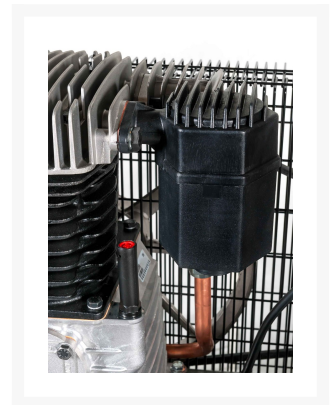




Compressor HK 650-270 Pro 11 bar 5.5 hp/4 kW 469 l/min 270 l

Product Images



Additional Information

SKU	360668
EAN	08712418332476
Length (mm)	1500
Width (mm)	605
Height (mm)	1170
Weight (kg)	143.000000
Workload (labor/rest %)	50/50
Start	Direct
Drive	V-belt driven
Belt size	A61 (1550)
Flywheel diameter (mm)	385
Pulley diameter (mm)	150
Cylinders	2
Voltage (V)	400 V / 50 Hz / 3 Ph
Air receiver	Yes
Capacity air receiver (l)	270
Galvanized tank	No
Intake capacity (l/min)	612
Free air delivery (l/min)	469
Free air delivery (m3/h)	28.14
Cut-in pressure (bar)	9
Maximum pressure (bar)	11
Noise level dB(A) (0 m)	74
Noise level dB(A) (4 m)	54
Noise level dB(A) (7 m)	49
Sound volume reduction	No

Main air connection (")	1/2
Connection type	2 Universal
Number of reducable couplings air connections	2
Stages	2
Oilfree	No
Filter with reducer	No
Pump speed (RPM)	1184
Motor power (hp / kW)	5.5 HP / 4.0 kW
Wheels	Yes
Pump type	K25
Intercooler	Yes
After cooler	Yes

